

USER MANUAL

Label Rewinder

RWL501


THIS PRODUCT IS CERTIFIED:



APPLICATIONS

The unit is used to rewind the labels coming from the output of your label printer. The maximum roll diameter allowed is up to 250 mm (10") while the maximum label width is up to 220 mm (8.66").

POWER SUPPLY

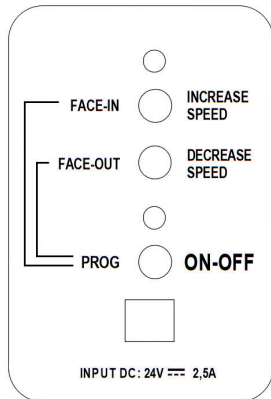
An external power supply 100/240VAC - 2.5A at 24V  allows an electronic circuit to provide, through the tension arm, the speed and sense of rotation auto adjustment.

WORKING CONDITIONS

- When the printer forwards the media for printing, the tension arm goes down, the device rewinds the media. Yellow or green led on depending on the selected rewinding mode (face-in or face-out).
- When the tension arm is in the middle position, the device is idle. Both yellow and green leds on.
- When the printer backwards the media, the tension arm goes up, the device unwinds it. Yellow or green led on depending on the selected rewinding mode (face-in or face-out).

When the unit is operating but the media is not loaded or it runs out, the tension arm reaches the lowest position and after few seconds the unit will stop by itself, both leds blink and it beeps.

CONTROL PANEL



ON-OFF

Push this button to turn On or Off the unit.

INCREASE SPEED

Push this button to increase the rotation speed.

DECREASE SPEED

Push this button to decrease the rotation speed.

LABEL FACE-OUT

Turn the unit off. Keep pushed "FACE OUT" button, push and release "ON-OFF" button while the green led turns on and off. The unit is now ready to operate.

LABEL FACE-IN

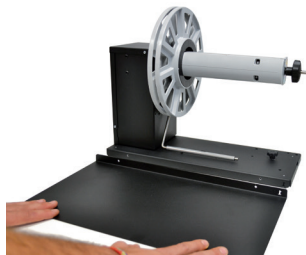
Turn the unit off. Keep pushed "FACE IN" button, push and release "ON-OFF" button while the yellow led turns on and off. The unit is now ready to operate.

INSTALLATION



STEP 1

Remove the two knobs from the rewinder's plate.



STEP 2

Put the second plate near the first one.



STEP 3

Use the two knobs to fasten the plates.



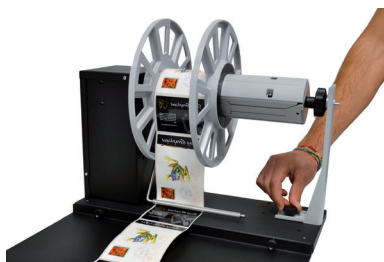
STEP 4

Load the empty cardboard core onto the core holder and attach the label to the core.



STEP 5

Insert the outer disc onto the core and screw the knob.



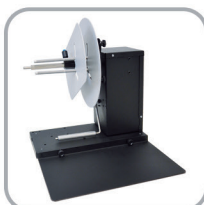
STEP 6

Install the support and fasten it to the base through the knob.

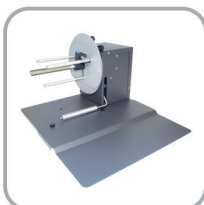
SMART SOLUTIONS FOR THE LABELING INDUSTRY

Label rewinder, label unwinder, electronic label dispenser and more...

OTHER
PRODUCTS



LABEL UNWINDER/REWINDER



SMALL LABEL
UNWINDER/REWINDER



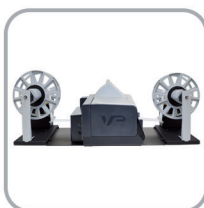
LABEL COUNTER



ROLL TO ROLL SYSTEM
FOR LABEL PRINTERS



ROLL TO ROLL SYSTEM
FOR EPSON PRINTERS



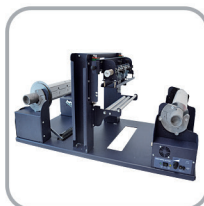
ROLL TO ROLL SYSTEM
FOR VipColor VP SERIES



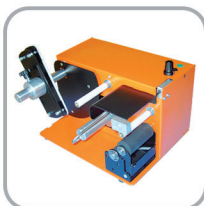
ROLL TO ROLL SYSTEM
FOR PRIMERA LX SERIES



MATRIX REMOVER AND SLITTER



LONGITUDINAL LABEL SLITTER



EASY LABEL DISPENSER



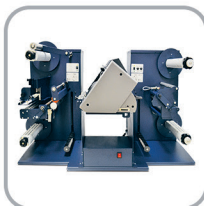
ELECTRONIC
LABEL DISPENSER



SCORPIO SERIES:
DIGITAL LABEL FINISHING SYSTEMS



GEMINI:
DIGITAL DIE CUTTER FOR SHEETS



VIRGO:
DESKTOP DIGITAL FINISHING SYSTEM



MOTORIZED CORE HOLDER
UNWINDER/REWINDER

- FOR MORE INFO CONTACT YOUR RESELLER -