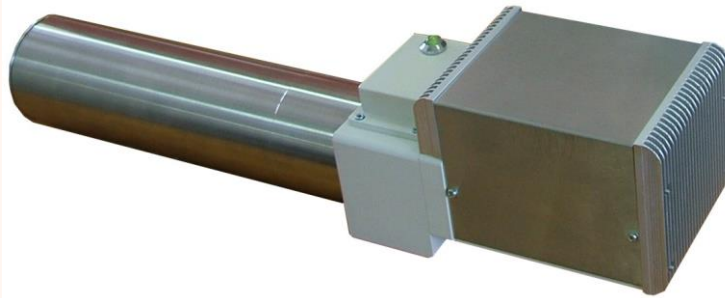


Foils and plastics



e-SolarMark FL

Laser Marking/Coding System on foils, plastics and metals



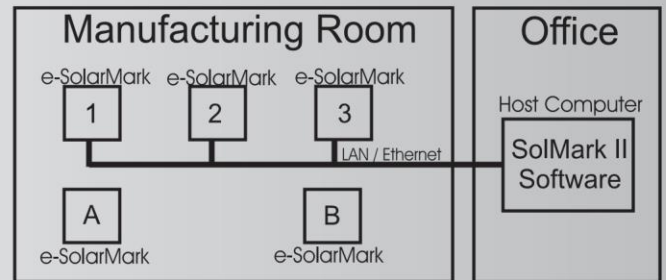
100 000
Maintenance free
Working hours *

- * No consumables: typical laser life time 100 000 working hours
- * Minimal costs of operation: integrated air-cooling, 1-ph power supply, low power consumption

- ✍ Revolutionary solution for permanent coding on packaging foils, various plastic / metal products and packages
- ✍ Vector-quality code in Stationary and "On the Fly" marking / coding
- ✍ Coding of alphanumeric texts / dates / timers, serial numbers, barcodes, 2D codes and graphics
- ✍ Compact and modular design, high integration flexibility due to number of options

- ✍ Internal software on real-time operating system
- ✍ Local / Remote job choice / modification / creation
- ✍ Unauthorized access protection
- ✍ Easy connection to the network
- ✍ Build-in touch screen panel for local job edition (option)
- ✍ On-line data exchange via: network (LAN/Ethernet) serial (RS232) and USB

Network (1, 2, 3 ...) and Autonomic (A, B, ...) mode of operation



Metals



- ✍ Different languages versions: English, Chinese, French, German, Spanish, Italian, Dutch, Polish, Swedish and Portuguese
- ✍ System available as OEM version

21 CFR Part 11
compliant



e-SolarMark FL

Laser Marking/Coding System on foils, plastics and metals

Technical Specifications

Laser:	20W	
Wavelength:	1062nm	
Life time:	100 000 working hours average	
Electrical requirements:	230V 50Hz / 115V 60Hz, 1PH	
Power consumption:	400W	
Cooling:	Air, integrated	
Ambient temperature:	5-40°C (40-105°F); Suggested 20-25°C (68-77°F)	
Enclosure Type::	IP 52 / NEMA 12	
Dimensions	Control Unit	Marking Unit
H x W x D mm	192x420x380	122x108x540
H x W x D in.	7.6x16.5x15.0	4.8x4.2x21.3
Weight	15 kg (33 lb.)	5 kg (11 lb.)

Communication

- ✍ USB / RS232 / Ethernet 10 Base T
- ✍ Shaft encoder input (recommended encoder resolution: 8196 pulses per marking field length)
- ✍ Product detector input: NPN / PNP - 24V Sensor
- ✍ Input / Output connector for: System interlocks; Remote Start / Stop, Ready, Marking, Fault signals
- ✍ SolMark II job edition software available for: Windows 9x, NT, 2000, ME, XP

Marking Specification			
Marking speed	1600 characters/sec Characters height 2mm, Lens and Material Dependent		
Lens type	F-Theta		
	LF3	LF4	LF6
Marking field (mm)	70x70	100x100	150x150

OPTIONAL CONFIGURATION:

- ✍ Red laser pointer for marking position preview
- ✍ System setting for printing on highly sensitive plastic materials (e.g. foils)
- ✍ Touch Screen GUI Control Unit interface for local job creation and modification

OPTIONAL EQUIPMENT:

- ✍ Fumes / Dust Extractor (with Active Carbon filter)
- ✍ Product Detector and Shaft Encoder

Specifications are subject to change without notice as products are continually improved

CE and **CDRH** compliant



Solaris Laser S.A.
Farbiarska 39, 02-862 Warsaw, Poland
tel.: +48 843 18 03
International phone.: +48 22 856 89 70
Fax: +48 22 483 26 36
e-mail: info@solarislaser.com.pl

